

SVC Environmental Scan - Table of Contents

This document contains data tables summarizing various service district data trends. The tables were created using tableau but they are not interactive or filterable in this PDF. Click on the links below for the interactive versions of these tables. These tables summarize raw environmental scan data which is available for download at the bottom link posted below.

Links to E-scan Dashboards on tableau server:

Service District Demos <https://goo.gl/bAhK9w>

Service District Workforce Trends <https://goo.gl/epWPqA>

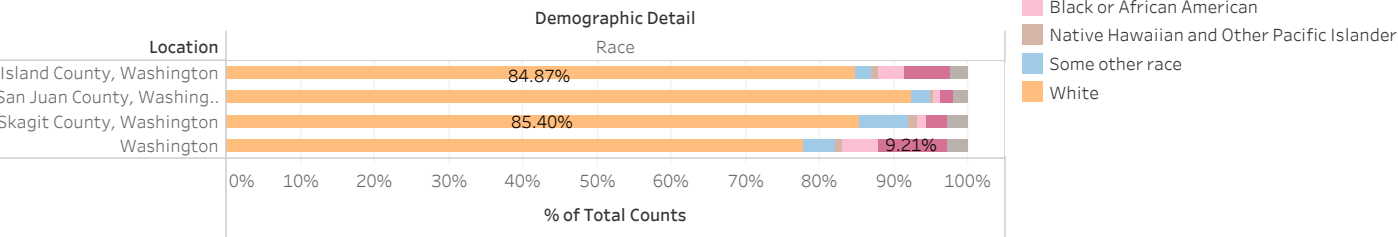
Service District High School Latino Data <https://goo.gl/iFk4Ry>

Capture Rate of Service District High School Graduates <https://goo.gl/rAUyJ3>

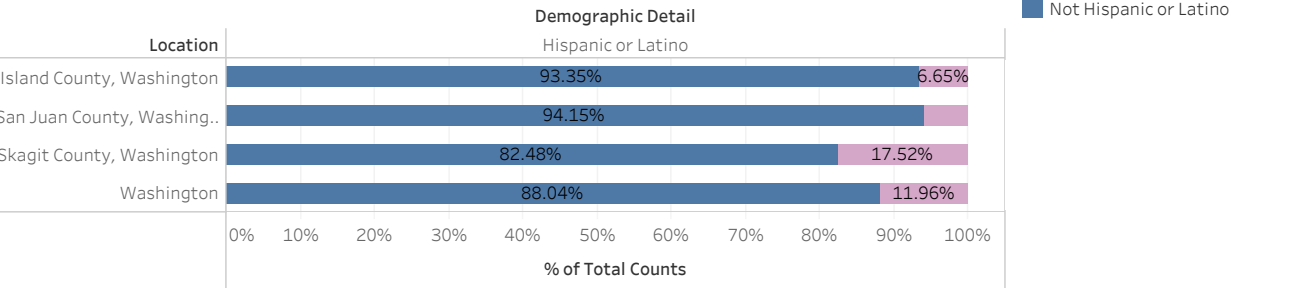
Link to more Environment Scan data: <https://goo.gl/sSniYt>

Table 1	Area Demographics Most Recent
Table 2	Area Actual Population Change Overall
Table 3	Overall Area Population Projections By County
Table 4	Area Population Projections by Age and By County
Table 5	Service District Veteran Datapoints
Table 6	Top Service District Employers
Table 7	Annual Service District Unemployment by County
Table 8	Top 25 Jobs in Skagit County
Table 9	Top 25 Jobs in Island County
Table 10	ERDC Capture Rate of Area High School Graduates Table
Table 11	Area Latino Graduating Class Size Map
Table 12	Area Latino Graduating Class Sizes Line Graph
Table 13	Area Grades 1-12 - Percent Latino by Year

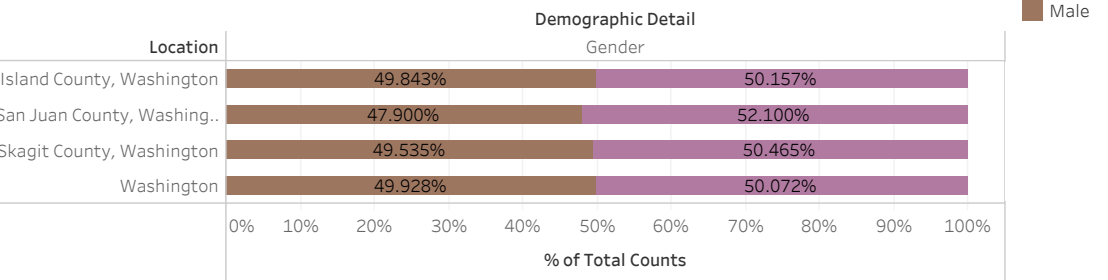
Table 1 Service District Demographics
Race



Hispanic Status



Gender



Age

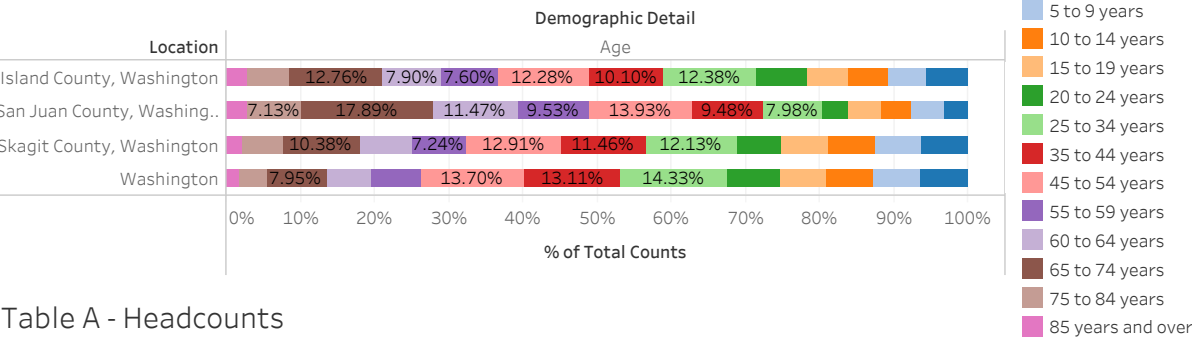
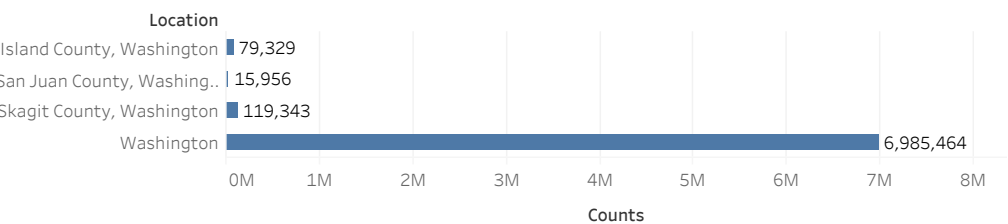


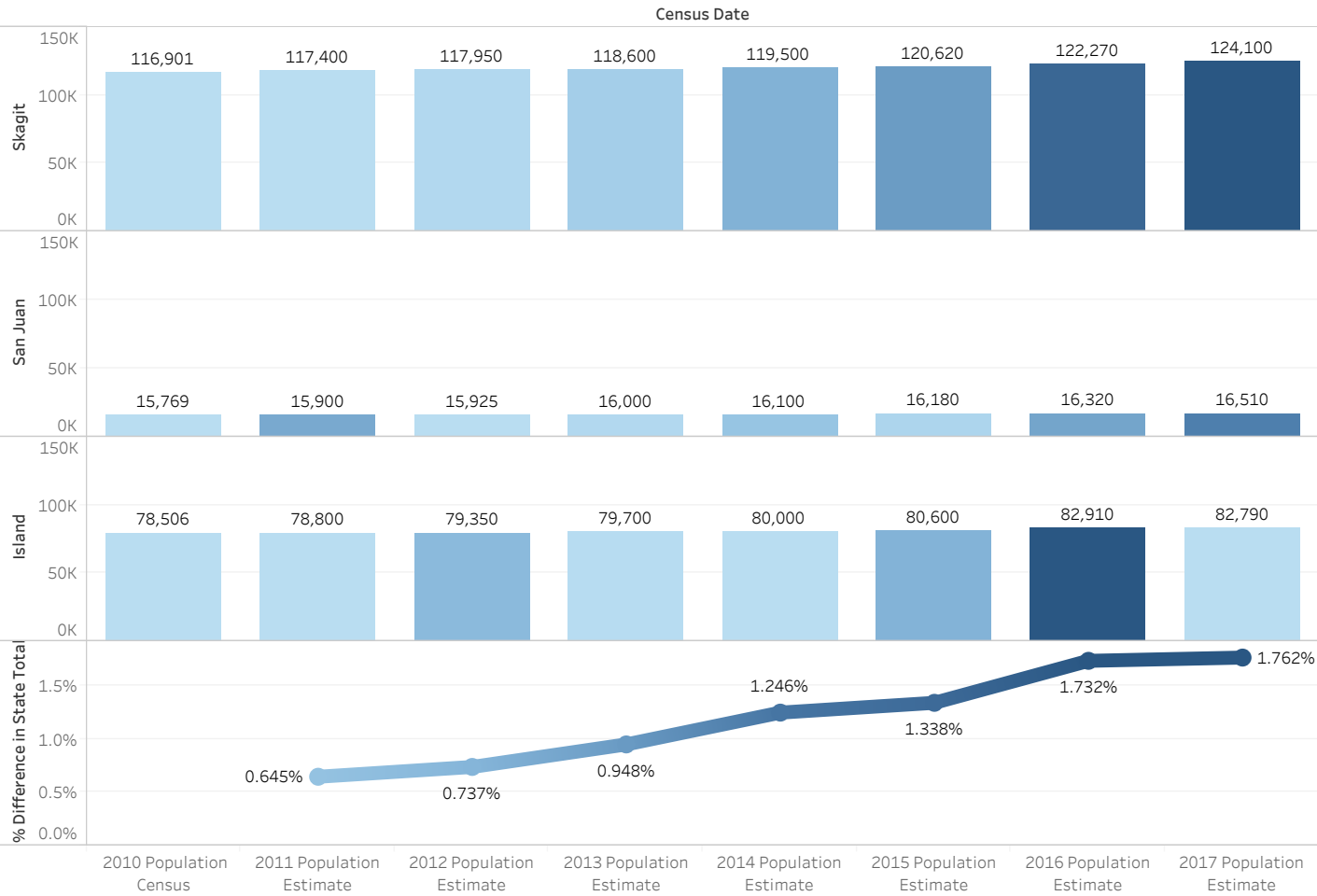
Table A - Headcounts



Percentages are based off of the headcounts reported in Table A

Source: 2011-2015 American Community Survey 5-Year Estimates

Table 2 Population Growth by County



% Difference from Previous Year

0.427% 1.497% Source: <https://www.ofm.wa.gov>

Table 3 Population Projections by County

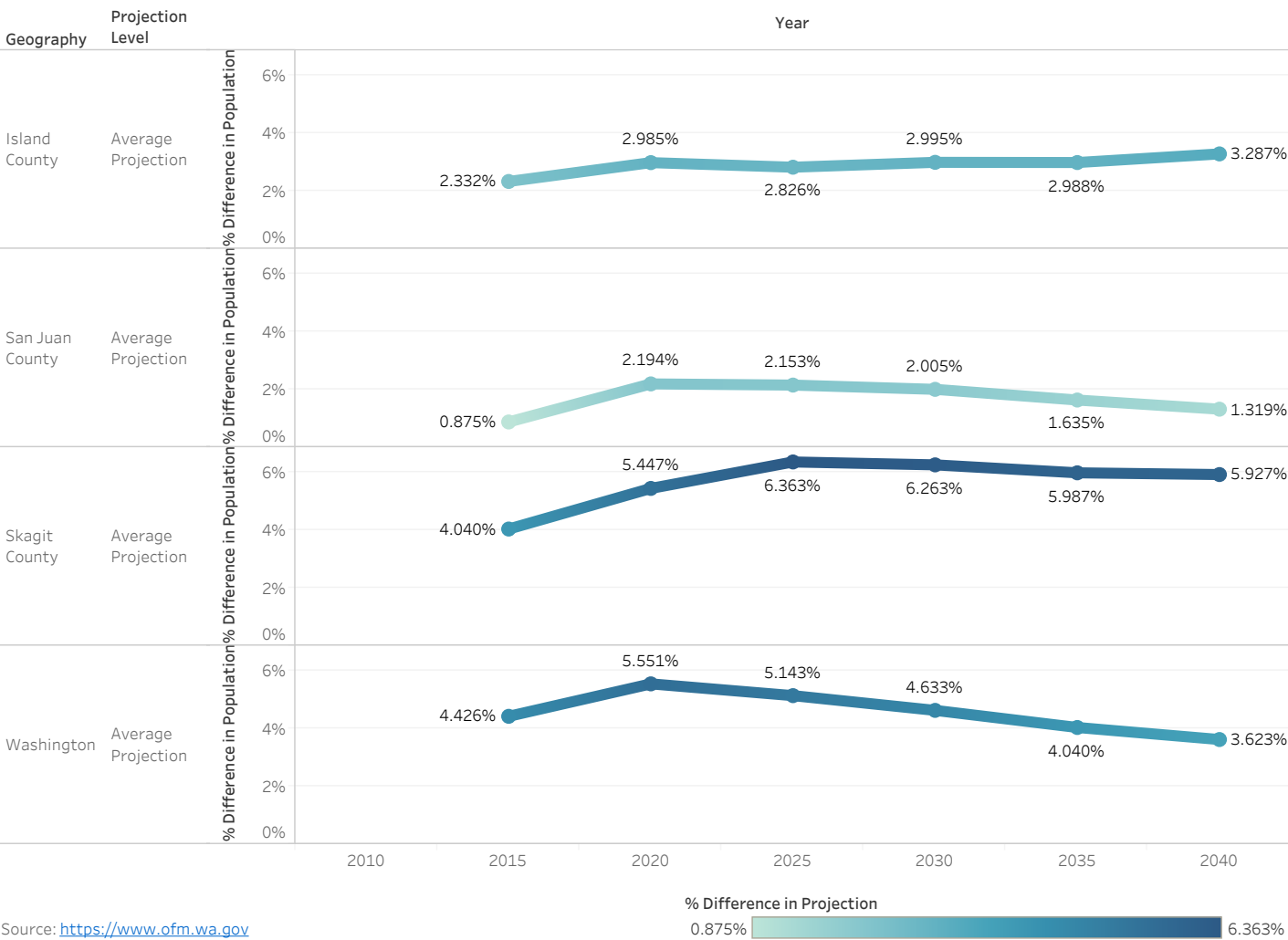


Table 4 Population Projection by Age



- County
- ISLAND
 - SAN JUAN
 - SKAGIT
 - SNOHOMISH
 - WHATCOM



Source: <https://www.ofm.wa.gov>

Table 5 Service District Veteran Datapoints

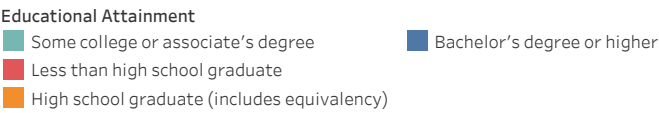


Table A - Veteran vs Non-Veteran 25 Years Old and Over - Educational Attainment %

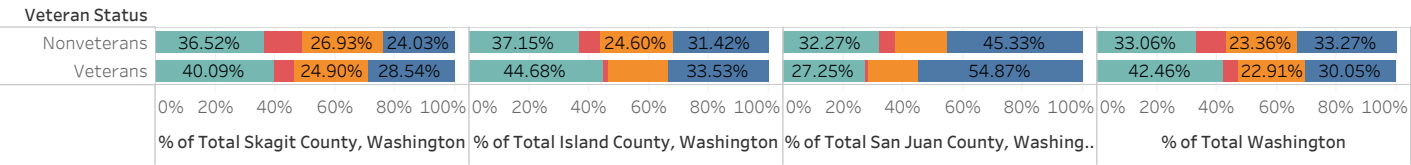
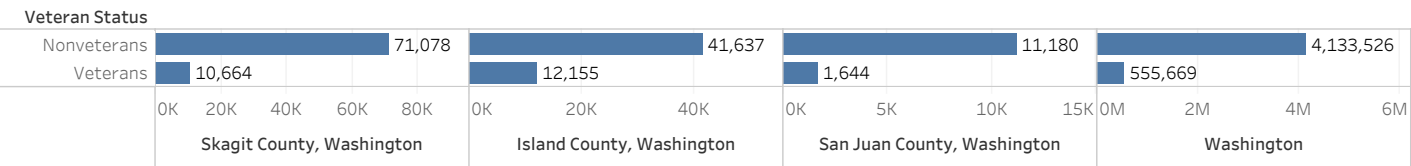


Table B - Veteran vs Non-Veteran 25 Years Old and Over - Counts



Percentages in Table A are based off of the counts in Table B.

Source: 2011-2015 American Community Survey 5-Year Estimates

Veteran vs Non-Veteran 18-64 Years Old - Percentages by geographic area

Geography	Veteran Status	
	Non-Veteran	Veteran
Island County, Washington	34,814 81.82%	7,737 18.18%
San Juan County, Washington	8,620 93.97%	553 6.03%
Skagit County, Washington	65,047 92.65%	5,158 7.35%
Washington	4,064,461 92.54%	327,533 7.46%



Table 6 Top Service District Employers by County

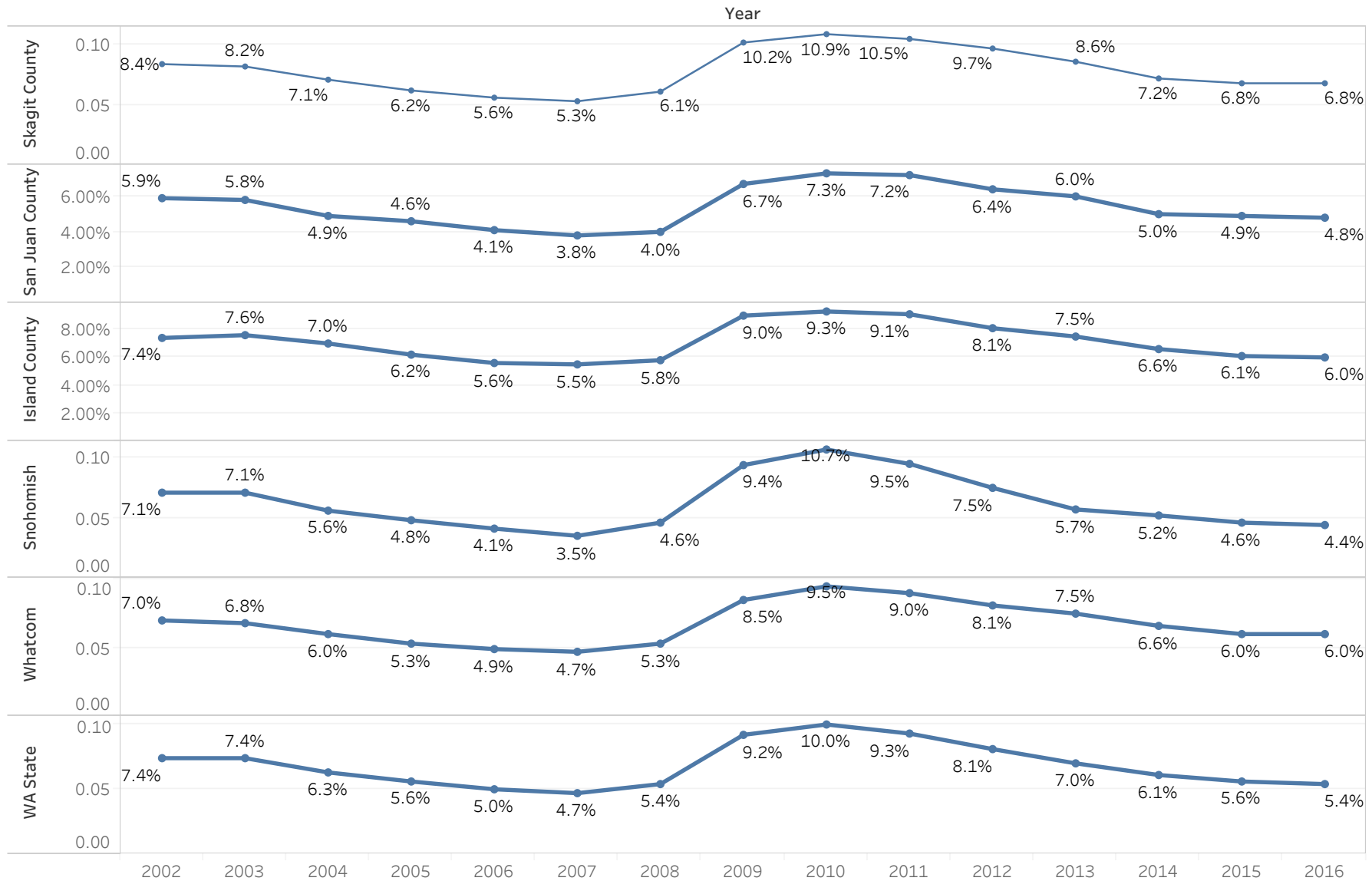
County	Sector	Top 5 Companies	% of Total Employees by County and Sector	Employees
Whatcom County	Government/Private	St Joseph Hospital	13.86%	2,126
		Lummi Nation	11.61%	1,780
		Bellingham Public Schools	6.44%	987
		Whatcom County	5.75%	881
		Western Washington University	5.47%	839
		Other Employers	56.88%	8,722
Snohomish County	Government/Private	The Boeing Company	44.51%	34,500
		Providence Regional Medical Center	6.16%	4,775
		The Tulalip Tribes	4.13%	3,200
		Naval Station Everett	3.85%	2,987
		Washington State Government (includes colleges)	3.81%	2,950
		Other Employers	37.54%	29,096
Skagit County	Government/Private	Skagit Regional Health	18.45%	1,802
		Island Hospital	8.04%	785
		Janicki Industries	7.23%	706
		Skagit County Government	6.65%	649
		Sedro Woolley School District	5.19%	507
		Other Employers	54.44%	5,317
San Juan County	Government/Private	HOTEL DE HARO	17.75%	400
		YMCA	13.31%	300
		ROCHE HARBOR MARINA	11.09%	250
		ROSARIO RESORT	8.87%	200
		KING'S MARKET	4.44%	100
		Other Employers	44.54%	1,004
Island County	Government	NAS Whidbey	74.90%	9,788
		Oak Harbor School District	5.58%	729
		WhidbeyHealth Hospital	5.51%	720
		Island County	3.28%	429
		Navy Exchange	1.38%	180
		Other Employers	9.35%	1,222
	Private	Boeing4	37.37%	867
		Nichols Brothers Boat Builders	9.70%	225
		IDEX Health & Science	7.33%	170
		Island Home Nursing	7.11%	165
		Safeway	7.89%	183
		Other Employers	30.60%	710

% of Total Employees



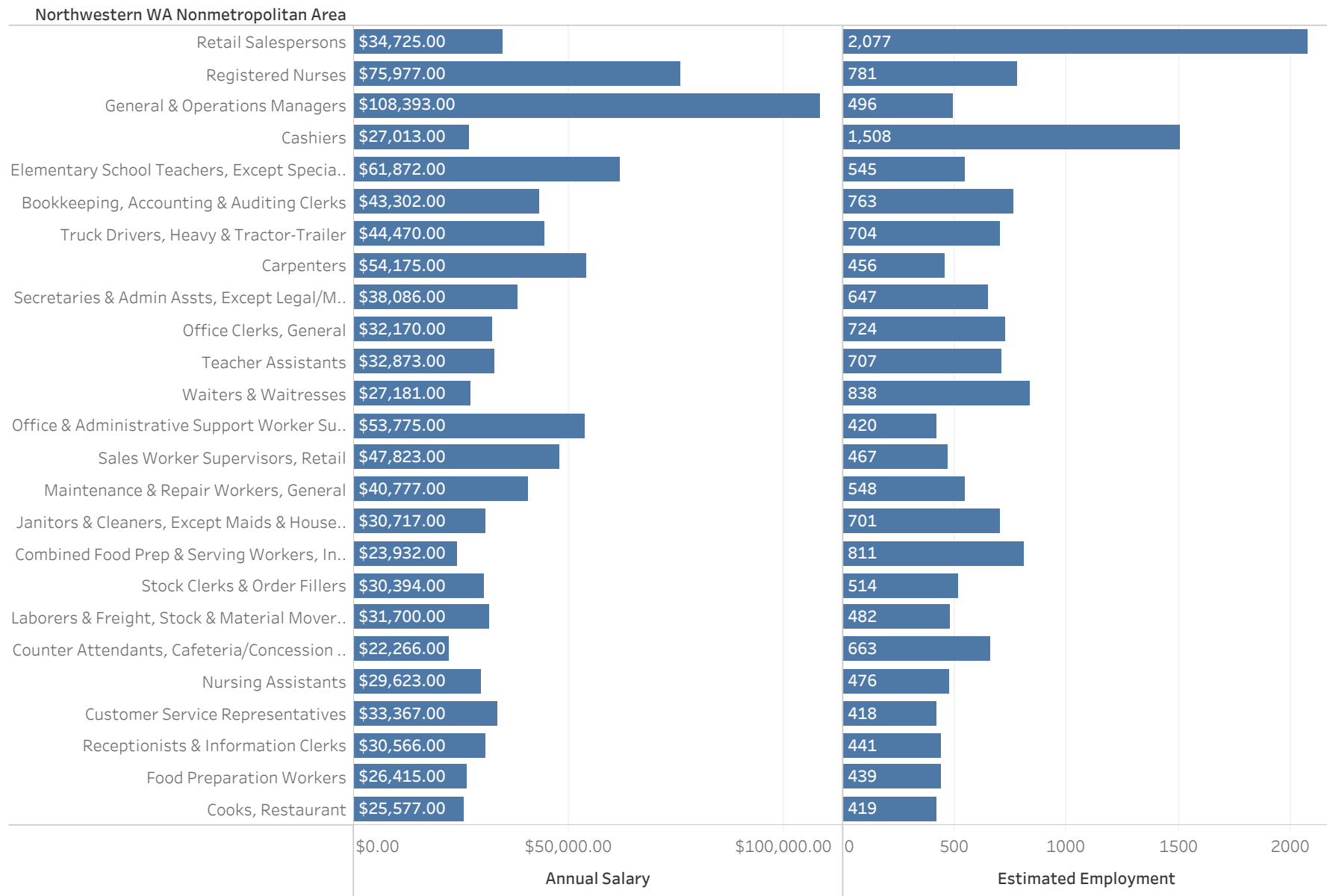
Sources: Center for Economic and Business Research at Western Washington University as of 12/31/15, ICEDC 2017 Major Employers in Island County, San Juan EDC/ WA ESD 2011, Economic Alliance Snohomish County (EASC) 2017, Center for Economic and Business Research at Western Washington University as of 12/31/15

Table 7 Annual Unemployment Rate by County



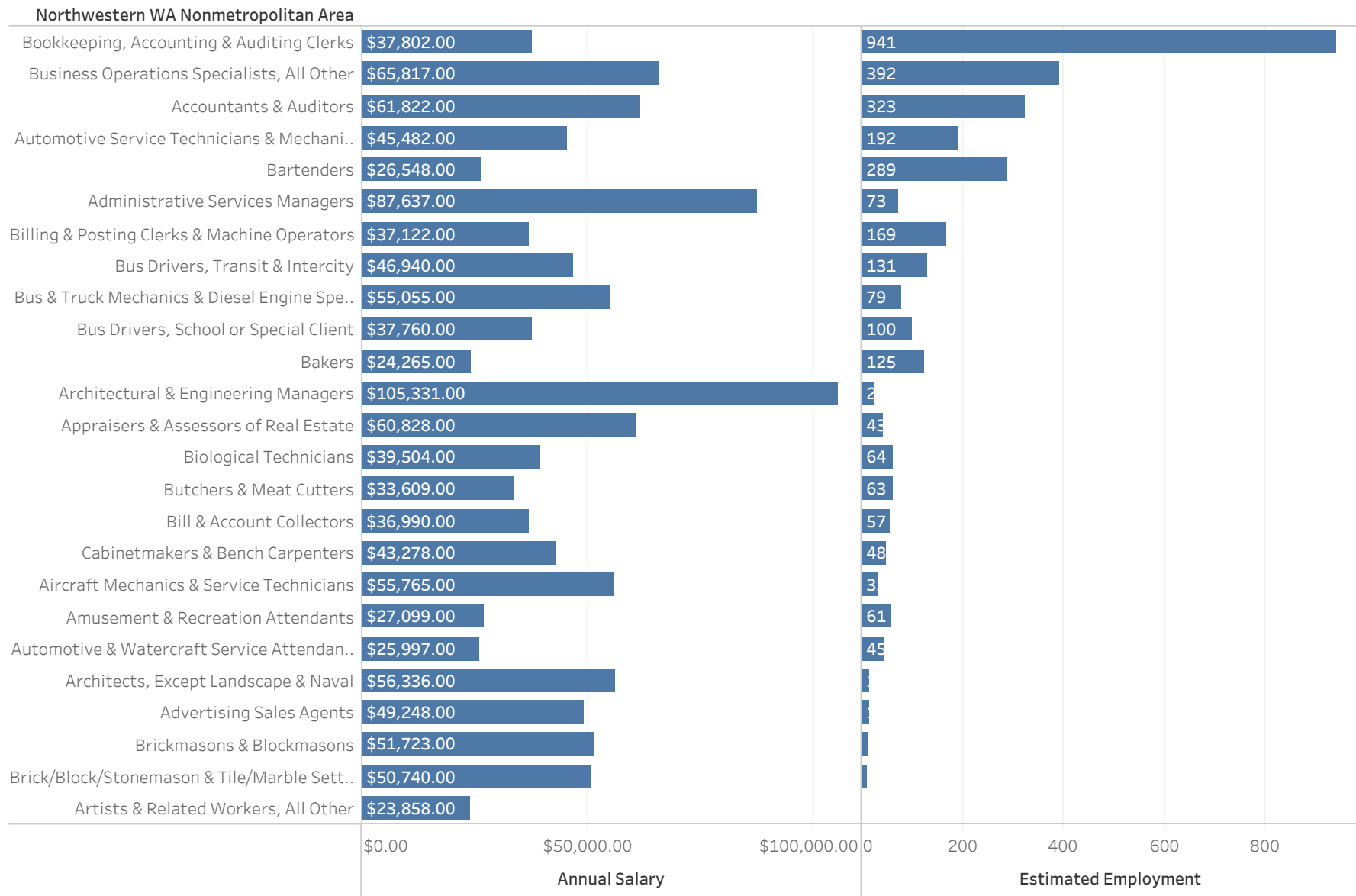
Source: Employment Security Department/WITS; U.S. Bureau of Labor Statistics, Local Area Unemployment Statistics

Table 8 2015 Top Occupations in Skagit County - Ranked by Annual Salary and Number of Positions



data source: ESD 2015 Occupational Employment and Wage Estimates

Table 9 2015 Top Jobs in Island County ranked by Annual Salary and Number of Positions



data source: ESD 2015 Occupational Employment and Wage Estimates

Table 10 ERDC Capture Rate of Area High School Graduates Table

		Year of Graduation										
School Name		0405	0506	0607	0708	0809	0910	1011	1112	1213	1314	1415
Anacortes High School	Capture Rate of HS Grads	21.88%	22.27%	15.85%	27.03%	20.69%	27.54%	19.79%	19.57%	21.76%	21.91%	17.99%
	Enrollment Count at SVC	49.0	47.0	29.0	50.0	36.0	46.0	37.0	36.0	37.0	39.0	34.0
Arlington High School	Capture Rate of HS Grads	5.73%	6.09%	9.32%	8.42%	7.72%	10.49%	5.04%	4.05%	5.94%	3.19%	7.23%
	Enrollment Count at SVC	16.0	17.0	26.0	25.0	22.0	30.0	17.0	13.0	19.0	10.0	24.0
Burlington Edison High School	Capture Rate of HS Grads	25.45%	30.73%	19.23%	28.00%	25.93%	32.92%	31.56%	32.14%	32.64%	28.77%	27.48%
	Enrollment Count at SVC	56.0	59.0	45.0	63.0	56.0	79.0	77.0	72.0	78.0	63.0	61.0
Mount Vernon High School	Capture Rate of HS Grads	30.33%	24.75%	29.75%	30.04%	32.47%	31.99%	30.79%	36.20%	32.15%	30.59%	28.41%
	Enrollment Count at SVC	91.0	75.0	72.0	85.0	100.0	95.0	93.0	118.0	109.0	93.0	100.0
Oak Harbor High School	Capture Rate of HS Grads	35.53%	23.96%	30.77%	29.36%	36.67%	30.84%	28.74%	24.40%	28.61%	24.20%	20.80%
	Enrollment Count at SVC	124.0	75.0	100.0	101.0	121.0	103.0	96.0	82.0	103.0	76.0	73.0
Sedro Woolley Senior High School	Capture Rate of HS Grads	18.06%	19.91%	19.91%	25.39%	27.48%	27.47%	25.65%	28.63%	28.24%	27.83%	26.43%
	Enrollment Count at SVC	39.0	43.0	46.0	49.0	61.0	64.0	59.0	71.0	61.0	64.0	60.0
Stanwood High School	Capture Rate of HS Grads	13.71%	14.33%	15.00%	20.50%	20.87%	18.54%	19.82%	16.33%	18.87%	15.34%	12.46%
	Enrollment Count at SVC	44.0	47.0	57.0	66.0	77.0	66.0	66.0	56.0	60.0	50.0	38.0

Enrollment Count

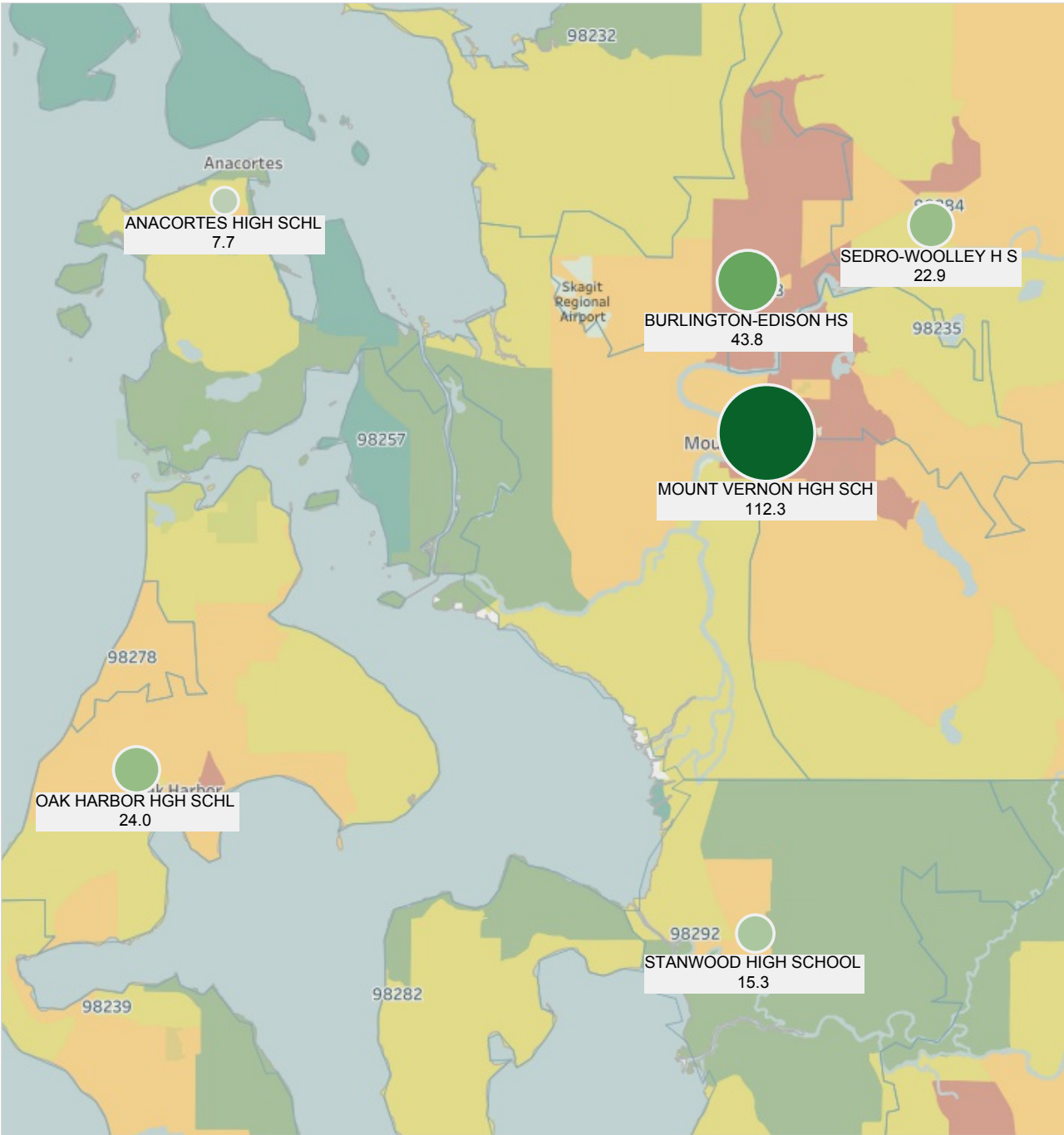
10.0



124.0

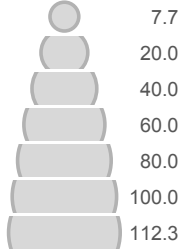
Source: Education Research and Data Center

Table 11 Latino Graduating Class Size



Grad Year
All

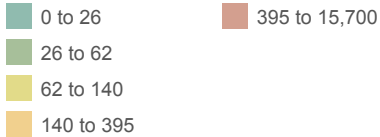
Avg. Graduating Class Size



Avg. Graduating Class Size

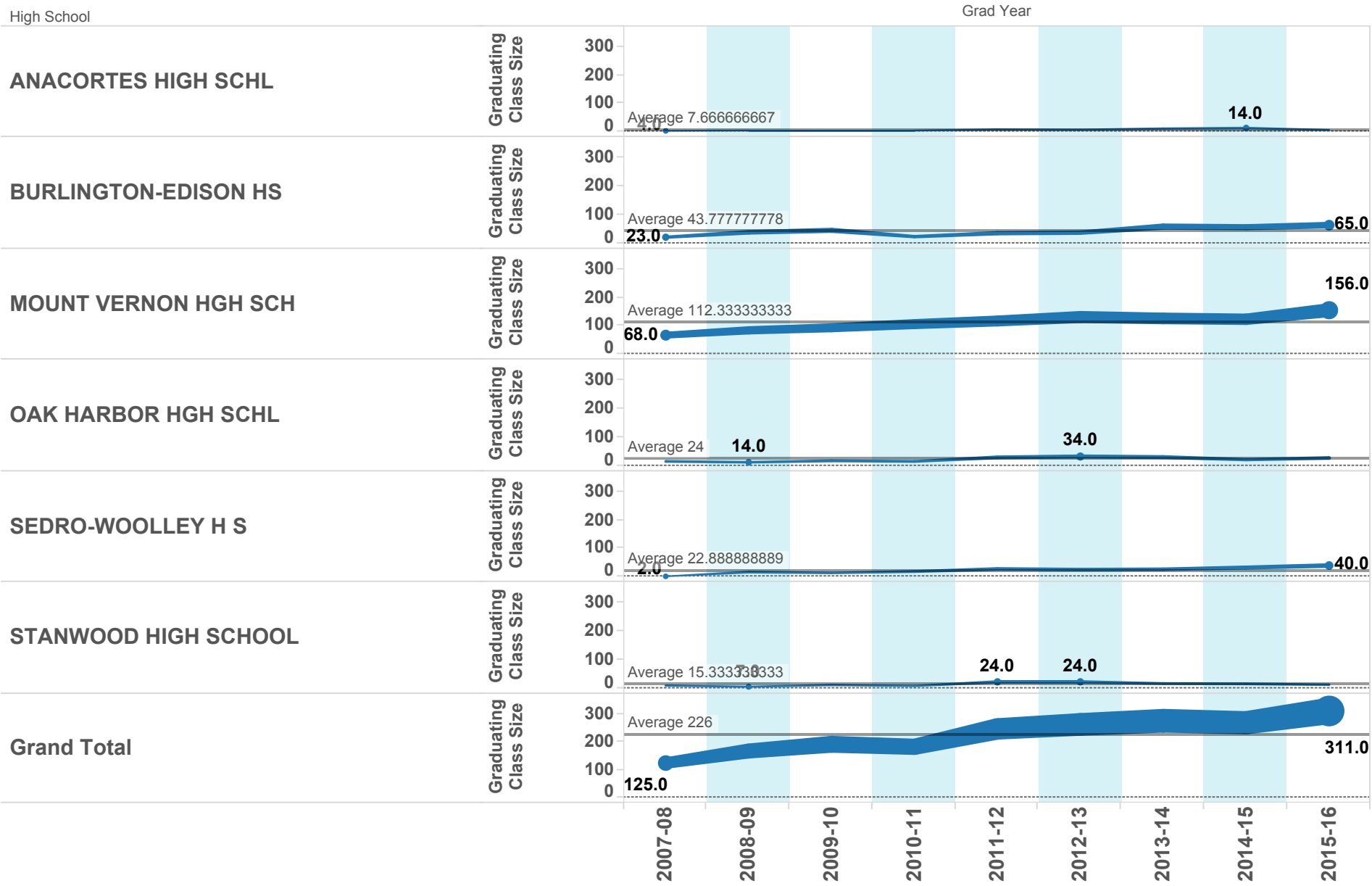


2018 Hispanic or Latino Ancestry Population



Source for grads: OSPI
Source for Latino population: US Census

Table 12 Latino Graduating Class Sizes



Source: OSPI

Measure Names

- Latino %
- Total Headcount of Students (All Ethni..

Source - OSPI

District Name

- ☐ Anacortes School District
- ☐ Arlington School District
- ☐ Burlington-Edison School District
- ☐ Concrete School District
- ☐ Coupeville School District
- ☐ La Conner School District
- ☒ Mount Vernon School District
- ☐ Oak Harbor School District
- ☐ Orcas Island School District
- ☐ San Juan Island School District
- ☐ Sedro-Woolley School District
- ☐ South Whidbey School District
- ☐ Stanwood-Camano School District

School Name

All

School Year

Multiple values

Grade

All

Source: OSPI

Table 13 Latino Percentage Grades 1-12 by Year

