



Board of Trustees

Board Progress Report

Core Theme -- Achievement Basic Skills

May 9, 2017

New Terminology

ABE/GED is now College & Career Bridge (CCB)

ESL is now English Language Acquisition (ELA)

Core Theme - Achievement

Objective 1:

Students will successfully progress and transition to college-level classes.

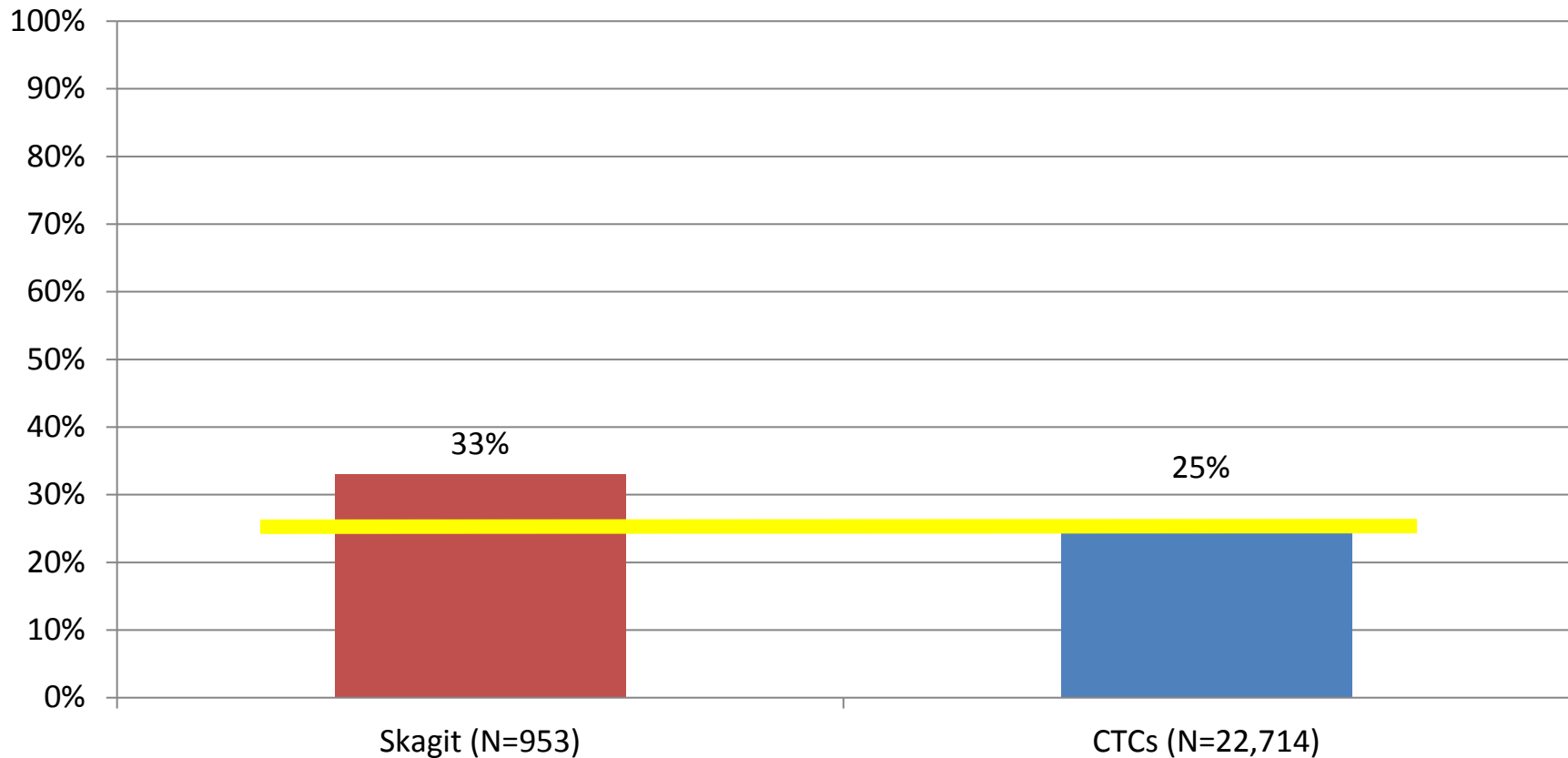
Indicator:

Student Achievement Cohort (Measuring Up) success measures for basic skills students by CCB and ELA.

Threshold:

SVC CCB and ELA measures will meet or exceed the CTC system measures.

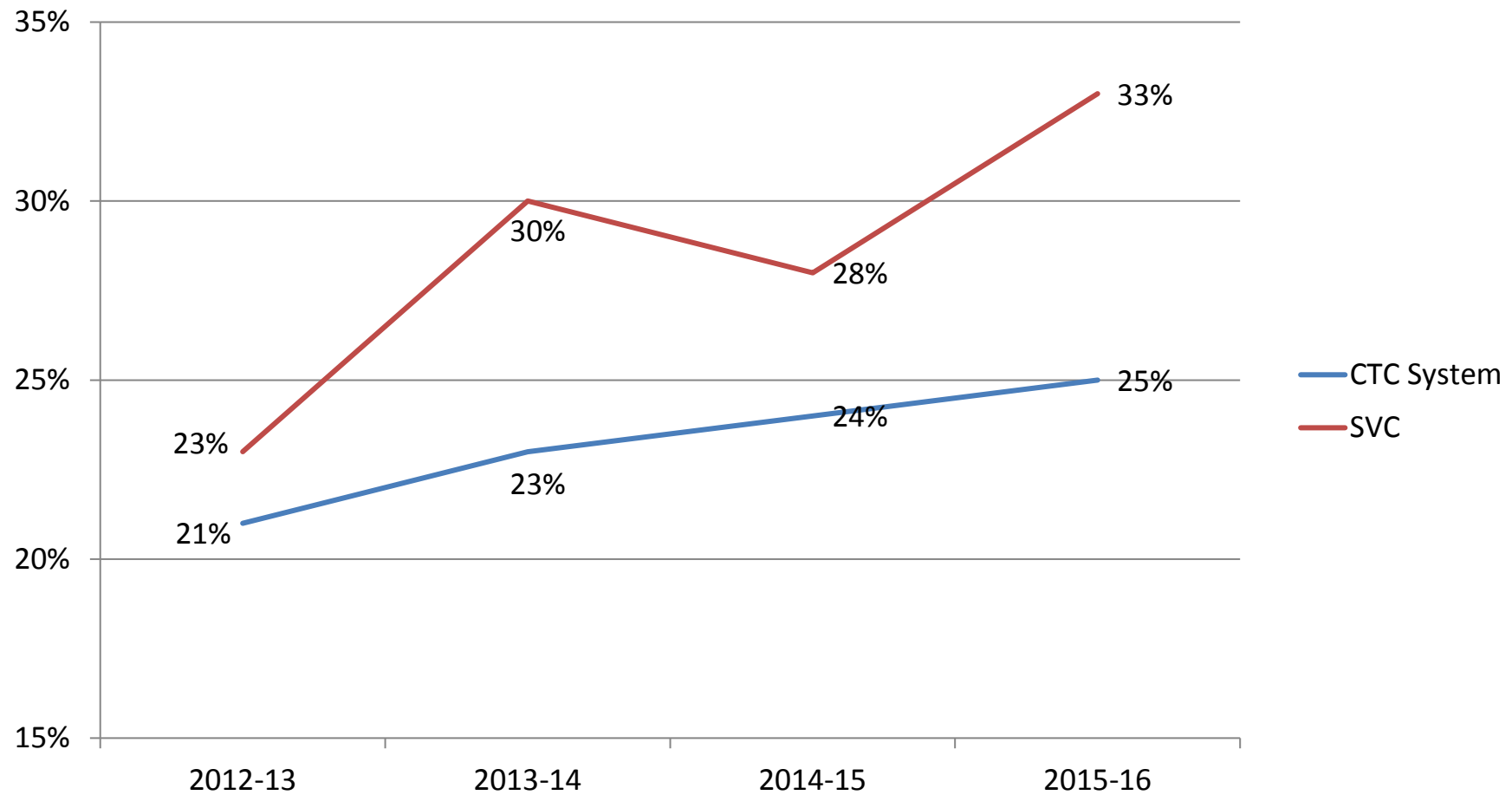
SVC CCB Students Transition to College-Level Classes in 2015-16



SVC's CCB student transition rate to college-level classes is 8 percentage points higher than CCB students across the CTC system.

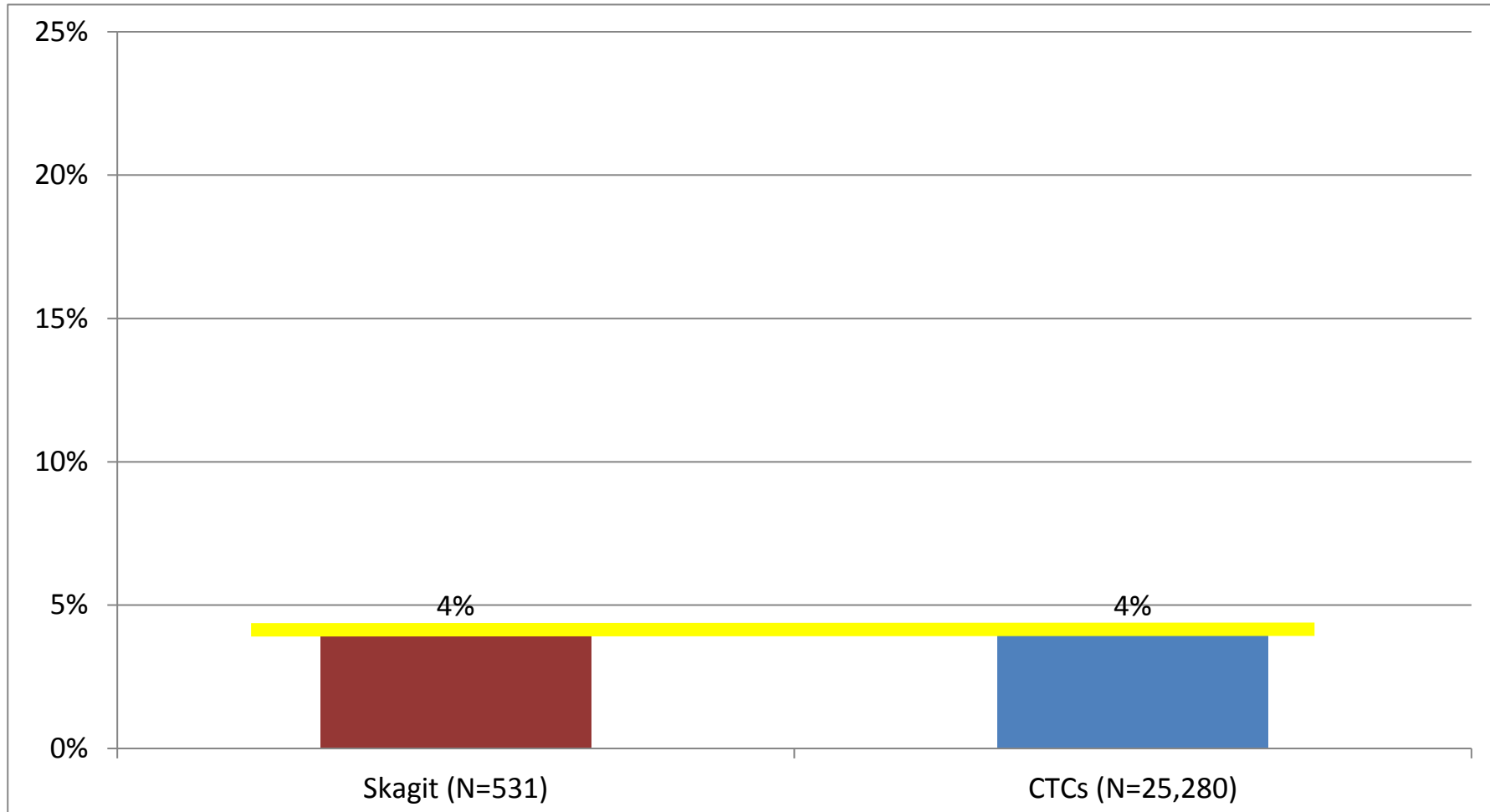


SVC CCB Students Transition to College-Level Classes



SVC CCB students transitioned to college-level classes at a rate generally greater than the CTC system for the past 4 years.

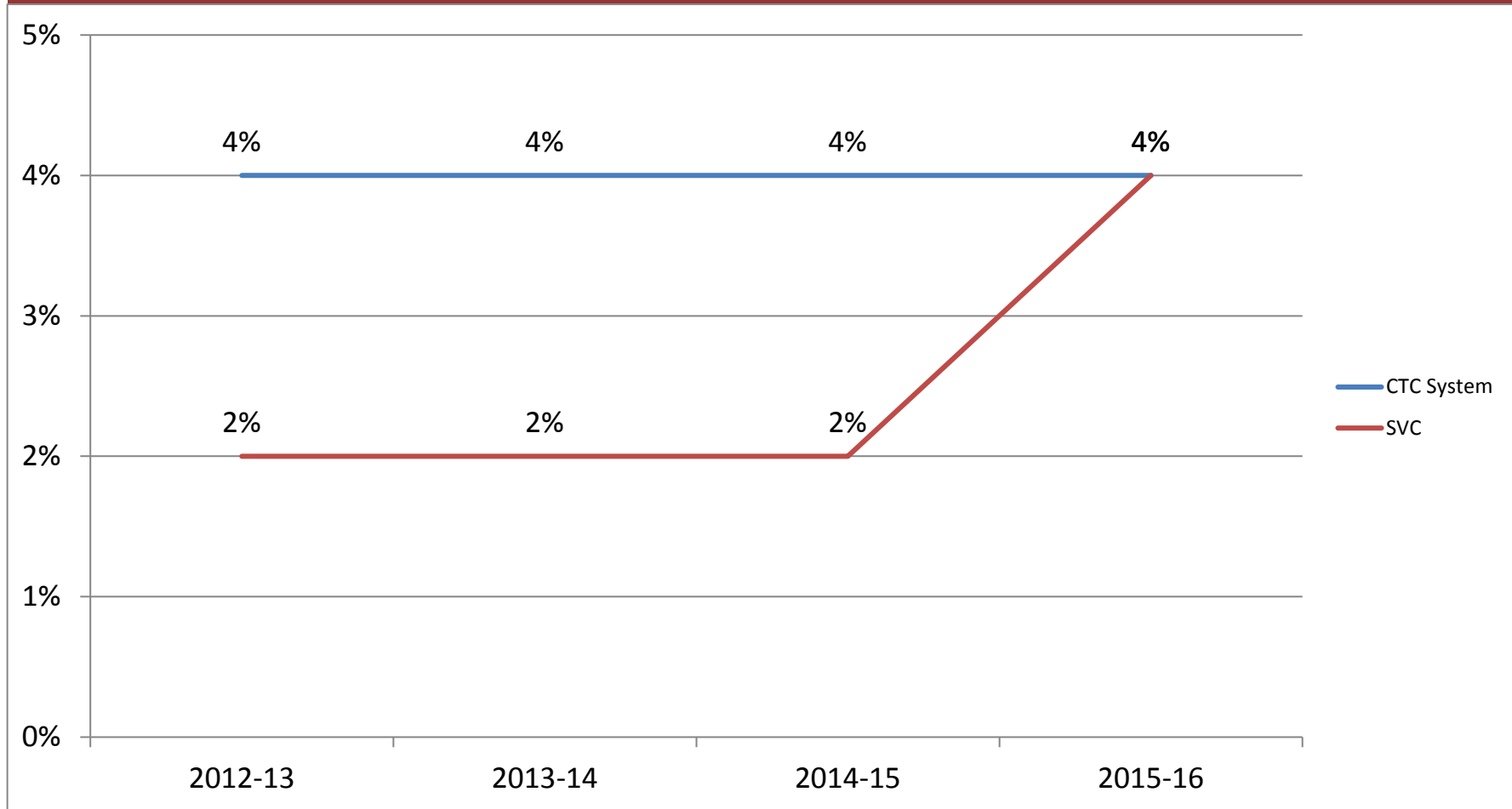
SVC ELA Students Transition to College-Level Classes in 2015-16



SVC's ELA student transition rate to college-level classes is now equal to ELA students across the CTC system.

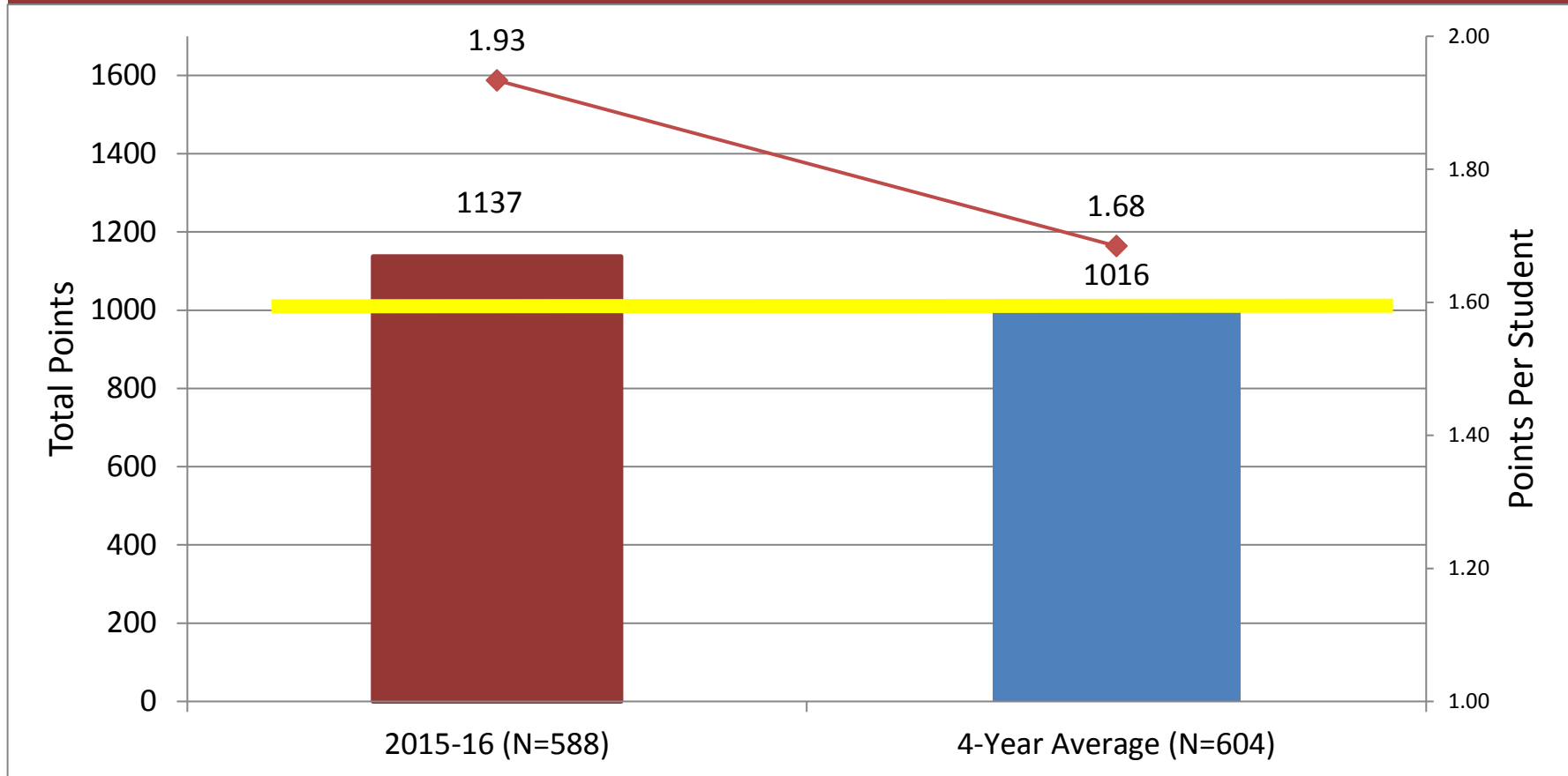


SVC ELA Students Transition to College-Level Classes



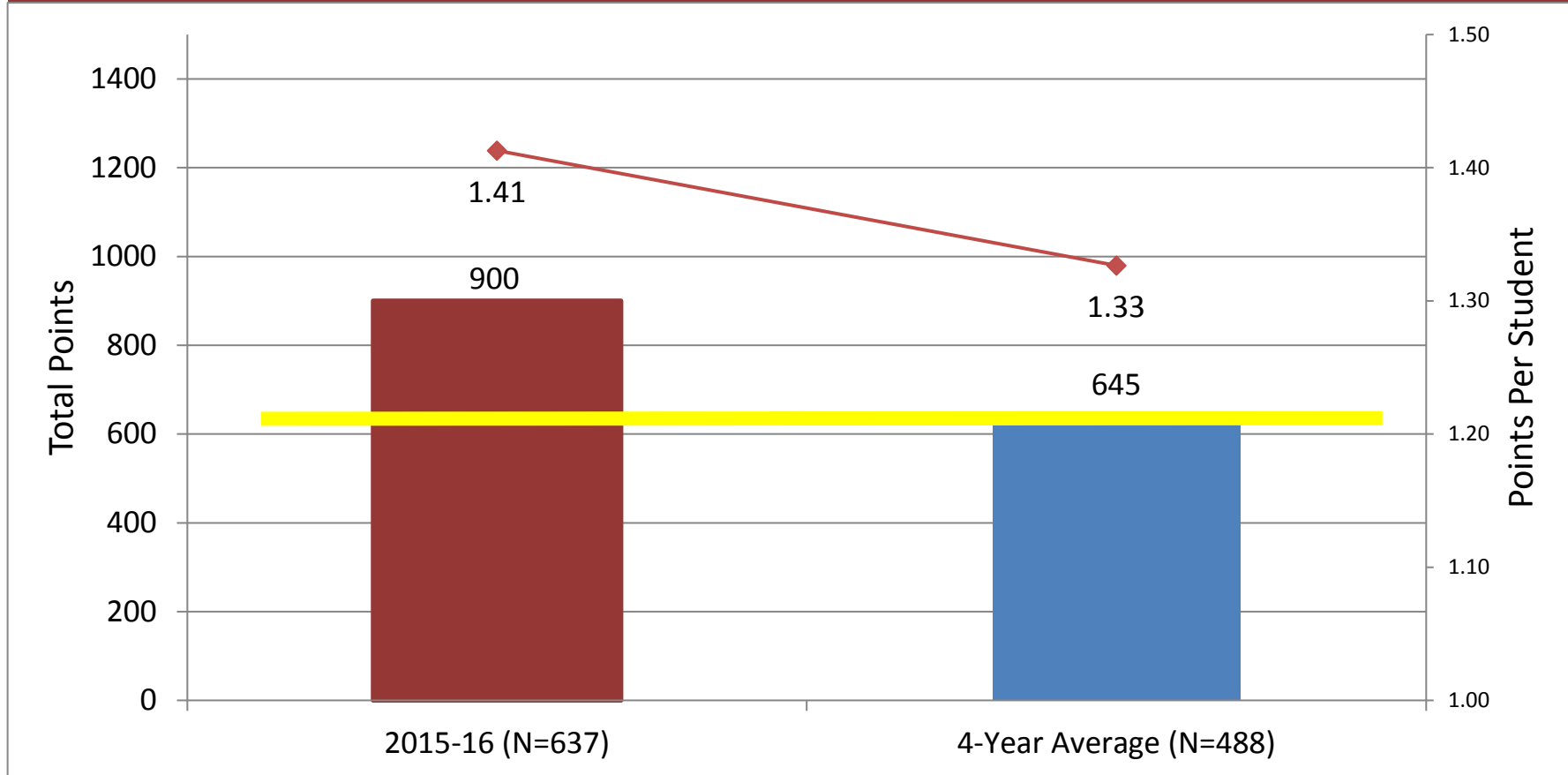
SVC ELA students have transitioned to college-level classes at a rate lower than the CTC system over the past few years but are now transitioning at an equal rate to ELA students in the CTC system.

SVC CCB Students Basic Skills Level Gains



In 2015-16, SVC CCB students earned more Student Achievement Initiative points for Basic Skills level gains than the SVC four-year average.

SVC ELA Students Basic Skills Level Gains



In 2015-16, SVC ELA students earned more Student Achievement Initiative Points for Basic Skills level gains than the SVC four-year average.

In Summary

SVC CCB students transitioned at significantly higher rates in 2015-16 and were 8 points higher than the System average.

SVC CCB students have consistently performed higher than the System average and are continuing this upward trend.

SVC ELA students doubled their transition rates to college-level classes in 2015-16.